

Supporting pupils with medical conditions policy

Published: October 2024

Review Date: October 2025



Our Vision

Doing all the good we can, through faith, love and excellence.

Micah 6:8: "This is what the Lord requires of you: to do justice, and to love kindness and to walk humbly with your God."

We want St Cuthbert's to be a school where:

Our Ethos

- everyone flourishes through the guidance of our Christian values.
- teaching and learning is creative, engaging and motivational.
- relationships are positive and serve to support others through **compassion** and **kindness**.

"I have come that they may have life and have it to the full." John 10, V10

Our Expectations

- we show **courage** to be the best that we can be.
- the children make excellent progress, fostering a love of learning.
- every child has an **equal** chance to fulfil their full potential.

"All human kind is made in the image of God." Genesis 1, V26-27

Individuality

- we grow and flourish as individuals; through **endurance** we can achieve.
- the value and worth of each individual is celebrated and everyone feels included.
- the children develop a spirit of **curiosity** and a willingness to rise to a challenge through a broad, enriched curriculum.

"All people are called to transform the world" Genesis 1 V26-31, Micah 6 V8

Working Together

- the children are able to **trust**, show **respect** and **friendship** to others.
- the community enables our pupils and school to grow in a happy, safe, healthy and spiritual environment.
- we foster links and contribute to the educational community through effective communication.

"Every person is an individual and also part of a community." 1 Cor. 12 V12-27

*This is a vision that is inclusive to all as we are reminded in the words of Luke 18:16:
"But Jesus called them to him, saying, "Let the children come to me, and do not hinder them, for to such belongs the kingdom of God."
For we are all equal in the eyes of God.*

Compassion

"Clothe yourselves with compassion, kindness, humility, gentleness and patience."

Colossians 3:12



Kindness

"Be kind to one another, tender-hearted, forgiving one another as God in Christ forgave you."

Ephesians 4:32



Equal

"You shall love your neighbour as yourself."

Mark 12:31



Potential

"Behold they are one people and they have all one language and this is only the beginning of what they will do." Genesis 11:6



Courage

"Be strong and courageous. Do not be frightened and do not be dismayed for the Lord your God is with you wherever you go."

Joshua 1:9



Trust

"My God is my strength in whom I trust."

Psalm 12



Friendship

"Encourage one another and build each other up."

1 Thessalonians 5:11



Respect

"For God gave us a spirit not of fear but of power and love and self-control."

Joshua 1:9



Endurance

"I can do all things through Him who strengthens"

Joshua 9



1. Aims

This policy aims to ensure that:

- Pupils, staff and parents understand how our school will support pupils with medical conditions
- Pupils with medical conditions are properly supported to allow them to access the same education as other pupils, including school trips and sporting activities

The governing board will implement this policy by:

- Making sure sufficient staff are suitably trained
- Making staff aware of pupil's condition, where appropriate
- Making sure there are cover arrangements to ensure someone is always available to support pupils with medical conditions
- Providing supply teachers with appropriate information about the policy and relevant pupils
- Developing and monitoring individual healthcare plans (IHPs)

2. Legislation and statutory responsibilities

This policy meets the requirements under [Section 100 of the Children and Families Act 2014](#), which places a duty on governing boards to make arrangements for supporting pupils at their school with medical conditions.

It is also based on the Department for Education's statutory guidance: [Supporting pupils at school with medical conditions](#).

This policy also complies with our funding agreement and articles of association.

3. Roles and responsibilities

3.1 The governing board

The governing board has ultimate responsibility to make arrangements to support pupils with medical conditions. The governing board will ensure that sufficient staff have received suitable training and are competent before they are responsible for supporting children with medical conditions.

3.2 The Headteacher

The Headteacher will:

- Make sure all staff are aware of this policy and understand their role in its implementation
- Ensure that there is a sufficient number of trained staff available to implement this policy and deliver against all individual healthcare plans (IHPs), including in contingency and emergency situations
- Take overall responsibility for the development of IHPs
- Make sure that school staff are appropriately insured and aware that they are insured to support pupils in this way
- Contact the school nursing service in the case of any pupil who has a medical condition that may require support at school, but who has not yet been brought to the attention of the school nurse

3.3 Staff

Supporting pupils with medical conditions during school hours is not the sole responsibility of one person. Any member of staff may be asked to provide support to pupils with medical conditions, although they will not be required to do so. This includes the administration of medicines.

Those staff who take on the responsibility to support pupils with medical conditions will receive sufficient and suitable training, and will achieve the necessary level of competency before doing so.

Teachers will take into account the needs of pupils with medical conditions that they teach. All staff will know what to do and respond accordingly when they become aware that a pupil with a medical condition needs help.

3.4 Parents

Parents will:

- Provide the school with sufficient and up-to-date information about their child's medical needs including changes to their medical needs and medication.
- Be involved in the development and review of their child's IHP and may be involved in its drafting
- Carry out any action they have agreed to as part of the implementation of the IHP e.g. provide medicines and equipment

3.5 Pupils

Pupils with medical conditions will often be best placed to provide information about how their condition affects them. Pupils should be fully involved in discussions about their medical support needs and contribute as much as possible to the development of their IHPs at an age appropriate level. They will also be supported to comply with their IHPs.

3.6 School nurses and other healthcare professionals

The school nursing service will support the school when a pupil has been identified as having a medical condition that will require support in school. Wherever possible this will be before the pupil starts school.

Healthcare professionals, such as GPs and pediatricians, will support schools nurses and staff with the provision of care for pupils.

4. Equal opportunities

Our school is clear about the need to actively support pupils with medical conditions to participate in school trips and visits, or in sporting activities, and not prevent them from doing so.

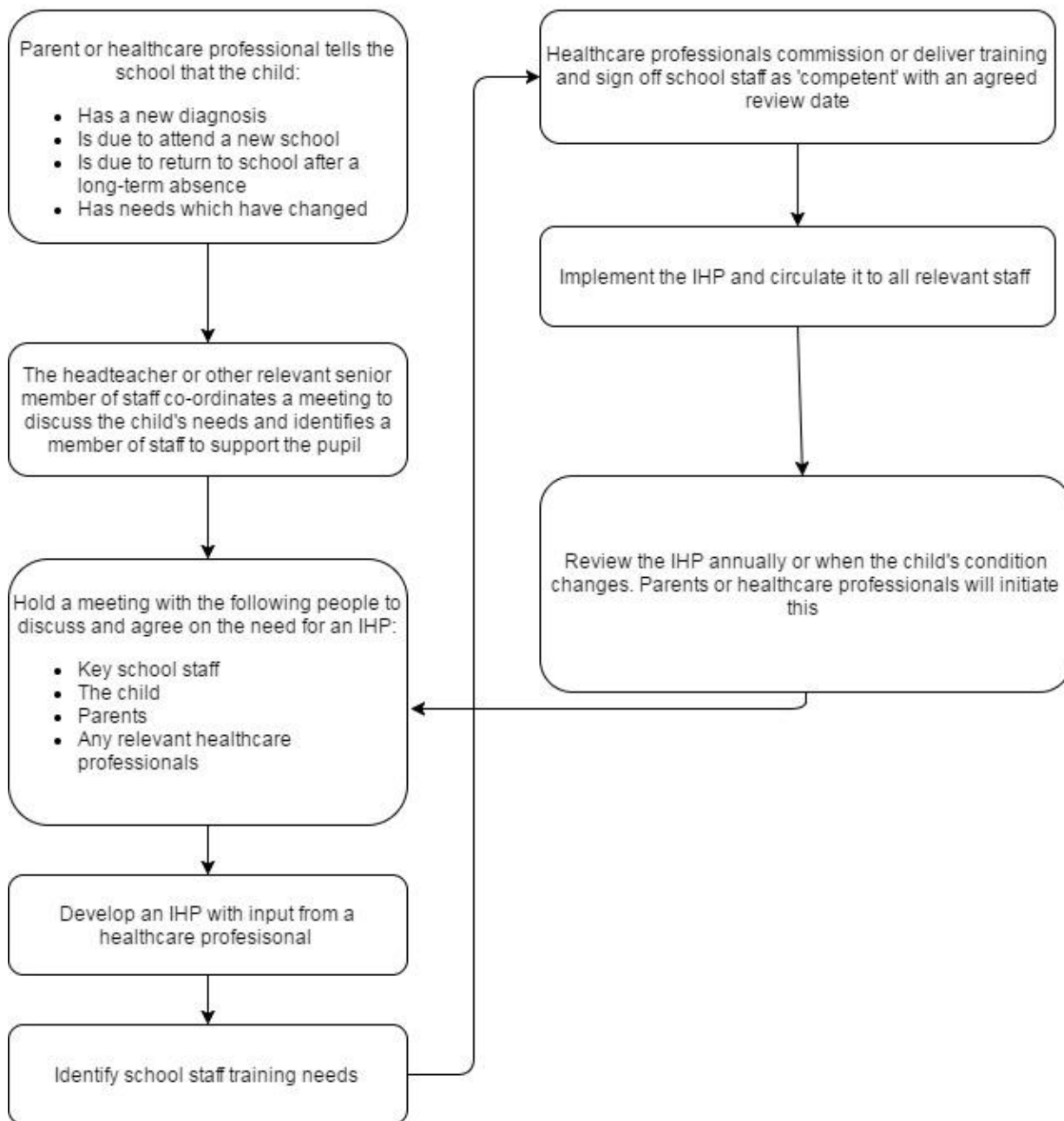
The school will consider what reasonable adjustments need to be made to enable these pupils to participate fully and safely on school trips, visits and sporting activities.

Risk assessments will be carried out so that planning arrangements take account of any steps needed to ensure that pupils with medical conditions are included. In doing so, pupils, their parents and any relevant healthcare professionals will be consulted.

5. Being notified that a child has a medical condition

When the school is notified that a pupil has a medical condition, the process outlined below will be followed to decide whether the pupil requires an IHP. The process will only go beyond step three if an IHP is required.

The school will make every effort to ensure that arrangements are put into place within 2 weeks, or by the beginning of the relevant term for pupils who are new to our school.



5. Medical conditions register/list

Schools admissions forms should request information on pre-existing medical conditions. Parents can inform the school at any point in the school year if a condition develops or is diagnosed. The medical conditions list should be updated and reviewed regularly.

Each class teacher should have an overview of the medical conditions for the pupils in their care. Supply staff and support staff should have access to the list on a need to know basis.

For pupils on the medical conditions list key stage transition point meetings should take place in advance of transferring to enable parents, school and health professionals to prepare IHP and train staff if appropriate.

6. Individual healthcare plans

The Headteacher has overall responsibility for the development of IHPs for pupils with medical conditions. This has been delegated to the SENCo.

Plans will be reviewed at least annually, or earlier if there is evidence that the pupil's needs have changed.

Plans will be developed with the pupil's best interests in mind and will set out:

- What needs to be done
- When
- By whom

Not all pupils with a medical condition will require an IHP. It will be agreed with a healthcare professional and the parents when an IHP would be inappropriate or disproportionate. This will be based on evidence. If there is not a consensus, the headteacher will make the final decision.

Plans will be drawn up in partnership with the school, parents and a relevant healthcare professional, such as the school nurse, specialist or pediatrician, who can best advise on the pupil's specific needs. The pupil will be involved wherever appropriate.

IHPs will be linked to, where appropriate or become part of, any statement of special educational needs (SEN) or education, health and care (EHC) plan as part of SEN provision. . If a pupil has SEN but does not have a statement or EHC plan, the SEN will be mentioned in the IHP.

The level of detail in the plan will depend on the complexity of the child's condition and how much support is needed. The governing board and the Headteacher will consider the following when deciding what information to record on IHPs:

- The medical condition, its triggers, signs, symptoms and treatments
- The pupil's resulting needs, including medication (dose, side effects and storage) and other treatments, time, facilities, equipment, testing, access to food and drink where this is used to manage their condition, dietary requirements and environmental issues, e.g. crowded corridors, travel time between lessons
- Specific support for the pupil's educational, social and emotional needs. For example, how absences will be managed, requirements for extra time to complete exams, use of rest periods or additional support in catching up with lessons, counselling sessions
- The level of support needed, including in emergencies. If a pupil is self-managing their medication, this will be clearly stated with appropriate arrangements for monitoring
- Who will provide this support, their training needs, expectations of their role and confirmation of proficiency to provide support for the pupil's medical condition from a healthcare professional, and cover arrangements for when they are unavailable
- Who in the school needs to be aware of the pupil's condition and the support required
- Arrangements for written permission from parents and the headteacher for medication to be administered by a member of staff, or self-administered by the pupil during school hours
- Separate arrangements or procedures required for school trips or other school activities outside of the normal school timetable that will ensure the pupil can participate, e.g. risk assessments
- Where confidentiality issues are raised by the parent/pupil, the designated individuals to be entrusted with information about the pupil's condition
- What to do in an emergency, including who to contact, and contingency arrangements

7. Managing medicines

7.1 Prescription medicines

Prescription medicines will only be administered at school:

- When it would be detrimental to the pupil's health or school attendance not to do so **and**
- Where we have parents' written consent (completion of medical request form)
- Signed by a physician with specific directions for administration

Pupils will not be given medicine containing aspirin unless prescribed by a doctor.

Anyone giving a pupil any medication (for example, for pain relief) will first check maximum dosages and when the previous dosage was taken. Parents will always be informed.

The school will only accept prescribed medicines that are:

- In-date
- Clearly labelled with the pupil's name
- Provided in the original container, as dispensed by the pharmacist, and include instructions for administration, dosage and storage

The school will accept insulin that is inside an insulin pen or pump rather than its original container, but it must be in date.

All medicines will be stored safely. Pupils will be informed about where their medicines are at all times and be able to access them immediately. Medicines and devices such as asthma inhalers, blood glucose testing meters and adrenaline pens will always be readily available to pupils and not locked away. A record is kept of pupils receiving medicine.

Medicines will be returned to parents to arrange for safe disposal when no longer required.

7.2 Non-prescription medicines

It is rare that non-prescription medicines will be self-administered by children or staff and will be considered on a case by case basis. They may only be administered at school if:

- The parent/guardian has completed an Administration of medicine request form
- A record is kept of all pupils receiving medicine

If pupils ask for painkillers at school, such as paracetamol or aspirin, they will NOT be given.

Pupils will not be given medicine containing aspirin unless prescribed by a doctor.

7.3 Controlled drugs

[Controlled drugs](#) are prescription medicines that are controlled under the [Misuse of Drugs Regulations 2001](#) and subsequent amendments, such as morphine or methadone.

A pupil who has been prescribed a controlled drug may have it in their possession if they are competent to do so, but they must not pass it to another pupil to use. All other controlled drugs are kept in a secure cupboard in the school office and only named staff have access.

Controlled drugs will be easily accessible in an emergency and a record of any doses used and the amount held will be kept.

7.4 Pupils managing their own needs

Pupils who are competent will be encouraged to take responsibility for managing their own medicines and procedures. This will be discussed with parents and it will be reflected in their IHPs.

Pupils will be allowed to carry their own medicines and relevant devices, when appropriate and will form part of their IHP. Staff will not force a pupil to take a medicine or carry out a necessary procedure if they refuse, but will follow the procedure agreed in the IHP and inform parents so that an alternative option can be considered, if necessary.

7.5 Unacceptable practice

School staff should use their discretion and judge each case individually with reference to the pupil's IHP, but it is generally not acceptable to:

- Prevent pupils from easily accessing their inhalers and medication, and administering their medication when and where necessary
- Assume that every pupil with the same condition requires the same treatment
- Ignore the views of the pupil or their parents
- Ignore medical evidence or opinion (although this may be challenged)
- Send children with medical conditions home frequently for reasons associated with their medical condition or prevent them from staying for normal school activities, including lunch, unless this is specified in their IHPs
- If the pupil becomes ill, send them to the school office or medical room unaccompanied or with someone unsuitable
- Penalise pupils for their attendance record if their absences are related to their medical condition, e.g. hospital appointments
- Prevent pupils from drinking, eating or taking toilet or other breaks whenever they need to in order to manage their medical condition effectively

- Require parents, or otherwise make them feel obliged, to attend school to administer medication or provide medical support to their pupil, including with toileting issues. No parent should have to give up working because the school is failing to support their child's medical needs
- Prevent pupils from participating, or create unnecessary barriers to pupils participating in any aspect of school life, including school trips, e.g. by requiring parents to accompany their child
- Administer, or ask pupils to administer, medicine in school toilets

7.6 School Trips, Visits and Sporting Events

- Medication required during a trip should be carried by the child, if this is normal practice. If not, then a trained member of staff or the parent/carer should be present, either of whom can carry and administer the medication as necessary. Please refer back to your internal EVC policy.
- Medication provided by the parent must be accompanied with written directions for its use. All responsible persons should have access to this information prior to the visit to enable sound judgements should a medical emergency arise. Team leaders should be comfortable with the administration of parental instructions when agreeing to accept young people as participants on a visit.

7.7 Home to school transport

- For those settings required to arrange home to school transport, precautions must be considered to ensure the safety of the pupil during the journey.
- Appropriate trained escorts if they consider them necessary to be available for the journey
- Drivers and escorts should know what to do in the case of a medical emergency. They should not generally administer medicines but where it is agreed that a driver or escort will administer medicines (i.e. in an emergency) they must receive training and support and fully understand what procedures and protocols to follow.
- All drivers and escorts should have basic first aid training as part of their role to support with emergency first aid if required. Additionally, trained escorts may be required to support some pupils with complex medical needs. These can be healthcare professionals or escorts trained by them.
- Where pupils have life threatening conditions, specific health care plans should be carried on vehicles. Individual transport health care plans will need input from parents and the responsible medical practitioner for the pupil concerned. The care plans should specify the steps to be taken to support the normal care of the pupil as well as the appropriate responses to emergency situations.

8. Emergency procedures

Staff will follow the school's normal emergency procedures (for example, calling 999). All pupils' IHPs will clearly set out what constitutes an emergency and will explain what to do.

If a pupil needs to be taken to hospital, staff will stay with the pupil until the parent arrives, or accompany the pupil to hospital by ambulance.

9. Training

Staff who are responsible for supporting pupils with medical needs will receive suitable and sufficient training to do so.

The training will be identified during the development or review of IHPs. Staff who provide support to pupils with medical conditions will be included in meetings where this is discussed.

The relevant healthcare professionals will lead on identifying the type and level of training required and will agree this with the Headteacher. Training will be kept up to date.

Training will:

- Be sufficient to ensure that staff are competent and have confidence in their ability to support the pupils
- Fulfil the requirements in the IHPs

- Help staff to have an understanding of the specific medical conditions they are being asked to deal with, their implications and preventative measures

Healthcare professionals will provide confirmation of the proficiency of staff in a medical procedure, or in providing medication.

All staff will receive training so that they are aware of this policy and understand their role in implementing it, for example, with preventative and emergency measures so they can recognise and act quickly when a problem occurs. This will be provided for new staff during their induction.

10. Record keeping

The governing board will ensure that written records are kept of all medicine administered to pupils. Parents will be informed if their pupil has been unwell at school.

IHPs are kept in a readily accessible place which all staff are aware of.

11. Liability and indemnity

Teachers and other school staff in charge of pupils have a common law duty to act as any reasonably prudent parent would to make sure that pupils are healthy and safe on school premises and this might, in exceptional circumstances, extend to administering medicine and/or taking action in an emergency.

This duty also extends to teachers leading activities taking place off the school site, such as educational visits, school outings or field trips. Section 3(5) of the Children's Act 1989 provides scope for teachers to do what is reasonable for the purpose of safeguarding or promoting children's welfare.

This can give protection to teachers acting reasonably in emergency situations such as on a school trip.

Subject to the point made in the above paragraph, there is no legal or contractual duty on school staff to administer medicine or supervise a pupil taking it. This is a voluntary role.

The governing board will ensure that the appropriate level of insurance is in place and appropriately reflects the school's level of risk.

12. Complaints

Parents with a complaint about their child's medical condition should discuss these directly with the Headteacher in the first instance. If the Headteacher cannot resolve the matter, they will direct parents to the school's complaints procedure.

13. Monitoring arrangements

This policy will be reviewed and approved by the governing board every year.

14. Links to other policies

This policy links to the following policies:

- Accessibility plan
- Complaints
- Equality information and objectives
- First aid
- Health and safety
- Safeguarding
- Special educational needs information report and policy
- Medication & Management Procedures