

02-10-2024



St Cuthbert's C of E Primary School

The Chase, Great Glen, Leicester LE8 9EQ
Tel: 0116 2592764

Headteacher's news

Harvest festival

In assembly this week, we will be talking about Harvest and how we can work together to support those who need it through our actions and our words.

Each year we work together to collect tins, packets and toiletries which we donate to local food banks. This year is no exception. We launch our Harvest collection tomorrow with rewards of 2 Dojo's for every bag (approx. 4 items) donated. We will be sharing our collection primarily with the Community Pantry based at St Cuthbert's Church but also with other local food banks. Please send any donations in with your child for them to receive their Dojo's.

Active Travel Month- October 2024

We have launched Active Travel month in school encouraging children to walk, cycle, scoot etc to school if they can. If you aren't able to travel actively all the way from home you can still take part by parking a distance from the school (e.g. 10 minutes away) and walking, cycling or scooting the rest.

We continue to share our learning and activities on X (Twitter) and Class dojo so please take a look at some fantastic images of the work the children are doing. @StCuthbertsCEP1 **Mrs J Hawkins**

Diary Dates

Friday 4th October 2024

Year 3 Stone Age Day

Monday 7th October-

Friday 11th October

Year 6 residential

Tuesday 8th October

EYFS 2025 intake open morning 10am

Wednesday 9th October

Year 5 Beaumanor hall trip

Friday 18th October

Year 4 Romans theme day

Monday 21st- Friday 25th

October

Half term week

Wednesday 30th and

Thursday 31st October
2023

Parents Evening

Thursday 31st October

Individual photographs

Dogs

We are still experiencing people bringing dogs on to the school grounds- this includes afterschool and at evening clubs.

Dogs should not be brought onto the school grounds (even if they are being carried). If you are waiting with your dog, please do not wait in the gateways. This is so that any child or adult with allergies' or anxieties can enter and exit the grounds without worry.

This does not include Guide or Assistance dogs.



Parking

Parents/ Carers who bring children to school by car must not:

- stop on the yellow lines outside the school entrance
- park on or in the school driveway/carpark
- park on any of the pavements near the school
- **park in the school car park between 8am and 6pm (this includes drop off and pick up from school or privately-run clubs)**

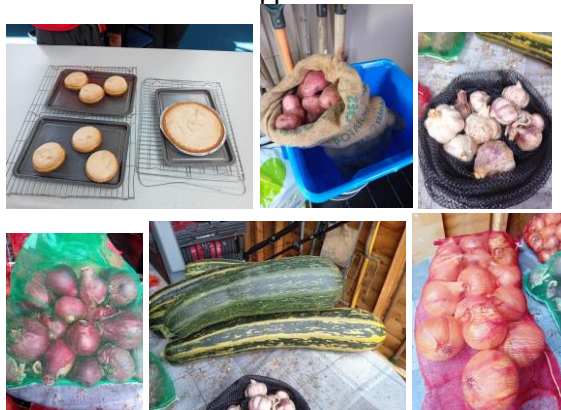
We also ask that you park considerately and do not obstruct driveways of neighbouring houses. St Cuthbert's and local residents seek your cooperation in resolving this issue by requesting that parents park sensibly and with due consideration for other road users.

As the weather is starting to get colder and wetter, please ensure your child has a coat in school.



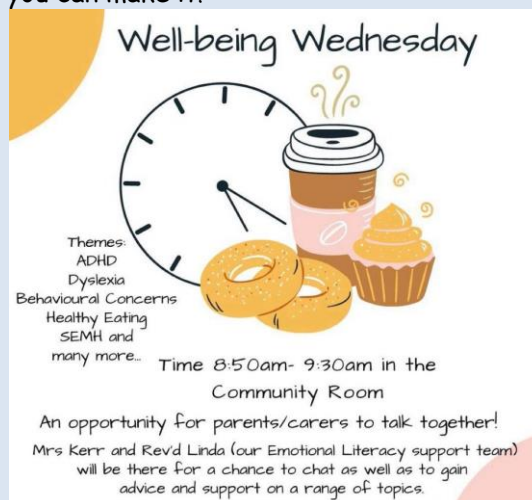
School Vegetable and Produce Sale

Thank you for supporting our sale- we raised £85.50! We will be holding our next sale on the 31st October so please come along and support us.



Well-Being Wednesday

Come and join us for our Well-Being Wednesday on the 2nd October. There will be free tea, coffee and tasty treats giving parents and carers the opportunity to chat with each other and staff. We hope you can make it!



Attendance and Absence

It is vital for your child's education that they attend school regularly and promptly.

If your child is absent due to illness or another reason, please ring the school office to inform us why your child is not in school or send an email. This is so we can record the type of absence and support your child on their return. We appreciate this can be tricky at times, but it avoids absences being marked as unauthorised and staff having to follow up on this with your child.

X highlights

The Foxes were making their fruit salads in DT today! We also quite enjoyed eating them afterwards! #fruit #tasty #healthy



The Owls have loved making their own sea collage! Today we had a go at evaluating them, saying what went well and what we might change! Well done for being such reflective learners! #reflective #design #collage



Outhbert's Cubs showing off their flexibility, control & balance during our yoga session. Wonderful gross motor skills Cubs 🧘 #preschool #yoga #active



In art, Leopards have been learning about a wet-on-wet style of water colour painting. They produced some stunning autumn leaf pictures. #painting #art #autumn



What a busy week! Learning our new sounds /o/ and /k/ making orange juice and kites! Brilliant number ordering and careful counting. Gorgeous bear portraits....Hedgehogs are Superstars! #EYFS #learning #play



Badgers Class enjoyed celebrating the European Day of Languages today and learnt lots about France and Spain. #languages #Europe #geography



Harvest Festival

This year we want to collect items to support the work St Cuthbert's Church is doing for local foodbanks who are helping people and families who are finding it difficult to buy essential items. It is a sad fact that there are many families affected in this way. From **Wednesday 2nd October until Monday 7th October** we are asking for any donations to be brought into school. The children will be given two dojo points for their donation. Please have a look at the list of items and donate what you can. Thank you.

Foodbank Collection



This Harvest Festival, we will be collecting tinned and packaged food for the local community.

This will be donated to

St Cuthbert's Church

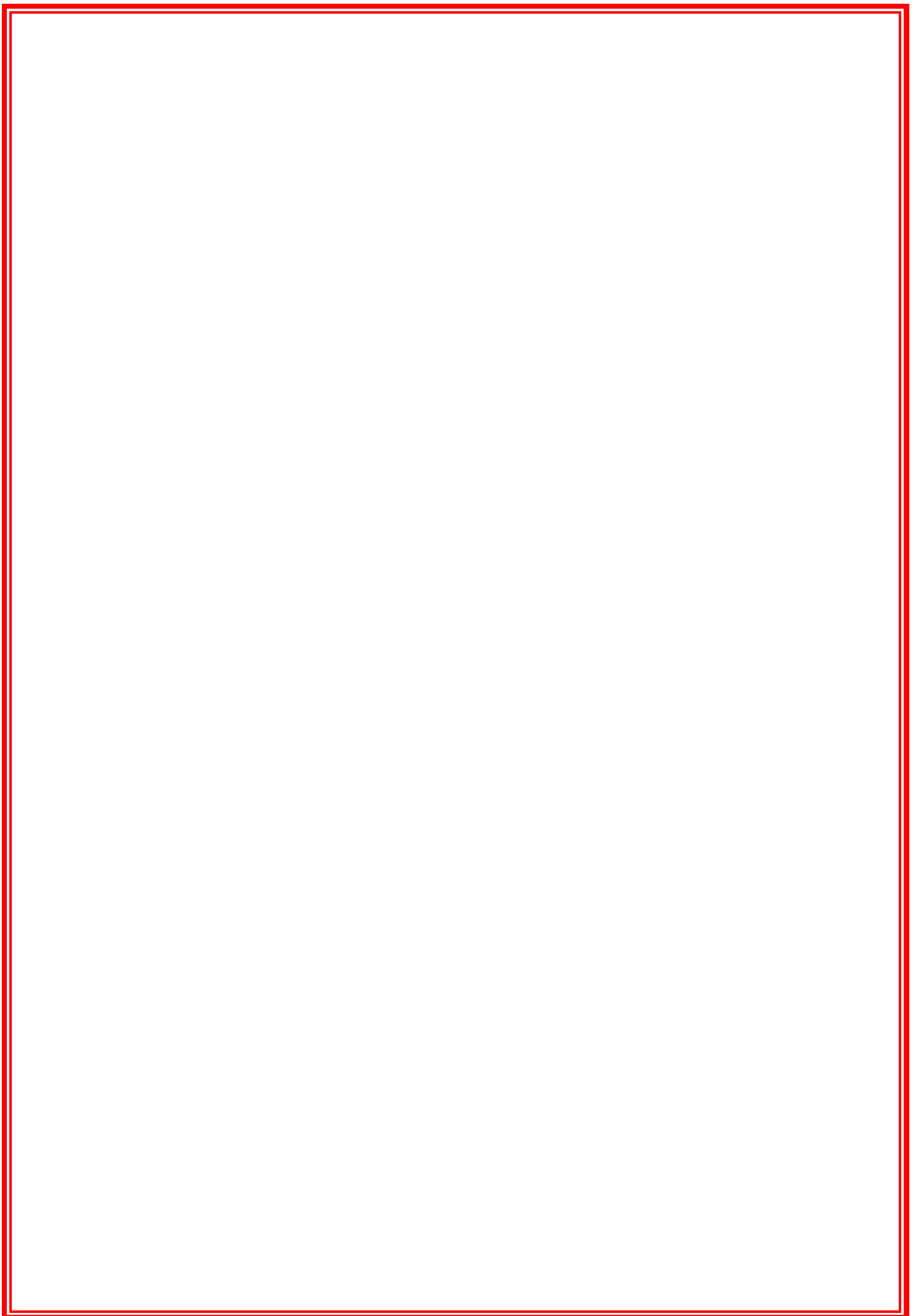
which helps local people in crisis.

We need:

baby food;	microwaveable puddings;	tinned meat and fish;
biscuits;	pasta sauces;	tinned puddings;
cereals;	rice;	tinned soup;
dried pasta;	shower gel;	tinned vegetables;
instant coffee;	snack bars;	toiletries;
long-life fruit juice;	tea bags;	toilet rolls;
long-life milk;	tinned fruit;	vegetarian options.

No fresh or chilled items, please. Small packets and tins are preferred!

Thank you!



You are invited to the....

St Cuthbert's

C.E Primary School

EYFS 2025 OPEN MORNING

For families interested in joining our school in Autumn 2025. Come along to talk to staff and see our 'outstanding' EYFS base!

Tuesday 8th October 2024

Start: 10am at

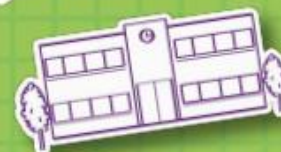
St Cuthbert's C.E Primary School.

Please call the school office on 0116 2592764 to book a place or email office@stcuthberts.leics.sch.uk

www.stcuthberts.leics.sch.uk



**From 1st September you
can apply for your child's
school place for the
2025/26 academic year**



**Secondary
school application
closing date**

**Thursday
31 October 2024**



**Primary and infant
to junior school
application closing date**

**Wednesday
15 January 2025**

**For hints and tips about
the process, information
on Leicestershire schools
and to apply, visit**



[Apply for a school place | Leicestershire County Council](#)

SH | B

Mr. S. Haigh
BMus(Hons), MISM
Brass
Tuition

Brass INSTRUMENT LESSONS

Unleash your musical talent
with brass lessons!

Beginner Lessons only £8

FREE Instrument Hire

Lessons

Available on:

- Cornet / Trumpet
- Tenor / French Horn
- Euphonium / Baritone
- Trombone / Tuba

So why wait? Sign up for
brass lessons today and
start your musical journey.

www.shbrass.co.uk



TRINITY
COLLEGE LONDON
Registered Exam Centre 69063



SIGN UP



MORE INFO



SH | B

Mr. S. Haigh
BMus (Hons), MISM
Brass
Tuition



TASTER SESSION

Today your child took part in a brass instrument workshop and demonstration and had the opportunity to try playing five different brass instruments; the cornet, tenor horn, baritone, trombone and tuba.



LESSONS IN SCHOOL

Lessons are offered in school to learn how to play these instruments. Lessons take place once a week during the school day and are rotated each week to minimise regular timetable clashes. The lessons last 30 minutes and as a beginner would be in a group of 2-4 children until your child progressed enough to be working towards their grade exams. The charge for the group lessons is £8.00 per session. You are invoiced monthly and charged to a debit/credit card.



FREE INSTRUMENTS AND MUSIC

Through a partnership with the Kibworth Band, instruments and beginner music are loaned to students free of charge whilst they are learning and can be taken home for practice. The band have limited availability of instruments, and these will be available on a first-come-first-serve basis. Should the band run out of available instruments the Leicestershire Music Hub are able to hire instruments at a very reasonable cost.



FUNDING SUPPORT

For parents of children in receipt of pupil premium or in need of any additional support there may be funding options available. Please contact myself or the school directly to discuss support that may be available.



KIBWORTH YOUTH BANDS

As your child progresses they will be able to be part of local ensembles such as the Kibworth Youth Band, and in the fullness of time the Kibworth Band itself. Some children can also progress on to National ensembles, such as the National Children's Brass Band of Great Britain.



SIGN UP

Lessons are offered on a first come - first serve basis. To sign up or for more information please use the QR codes or visit my website: www.shbrass.co.uk. In the first lesson children will have another opportunity to try the instruments and choose the most suitable.

CONTACT

Mr S. Haigh
Brass Peripatetic Teacher
BMus(Hons), MISM, ISM Registered Private Teacher
Fully DBS Checked
Email: s.haigh@shbrass.co.uk
Tel: 07800 504 882



MORE INFO



SIGN UP