

17<sup>th</sup> September 2025



# St Cuthbert's C of E Primary School

The Chase, Great Glen, Leicester LE8 9EQ

Tel: 0116 2592764

## Headteacher's News

The children are throwing themselves in to their first novels and topics, producing excellent work and challenging themselves to extend their knowledge and understanding. I am so proud of all the work I see, especially the effort being made to present it with beautiful handwriting and how the children are talking about how what they have learnt connects to other learning.

### School visits

Class teachers have started to plan educational visits and enrichment opportunities which we hope the children will enjoy. Please remember that for educational visits we ask for contributions towards the cost of the trip. This is voluntary but if there aren't enough funds then I'm afraid the trip will be unable to go ahead. Please speak to your child's class teacher or our office team if payment for trips is a concern and we will do all we can to support so that every child has the opportunity to go.

### Bromcom

We apologise again for the technical issues connected to Bromcom. This has been a Bromcom issue which we have been assured has been resolved. We continue to explore the capacity of the system and have this week set up parents' evening bookings (Preschool, Years 1-6) and information on Christmas Dinner will be sent shortly! **Please ensure you have the My Child at School app for updates and notifications (notifications must be enabled).**

Mrs J Hawkins

### Diary Dates

**Thursday 25<sup>th</sup> September**

Harvest Festival Sale

**Sunday 5<sup>th</sup> October 2025**

Harvest Festival

**Monday 6<sup>th</sup> October- Friday 10<sup>th</sup> October**

Year 6 Residential to Condover Hall

**Tuesday 14<sup>th</sup> October 2025**

EYFS 2026 Open Morning

**Wednesday 15<sup>th</sup> (Tuesday 14<sup>th</sup>**

Zebbras only) & **Thursday 16<sup>th</sup>**

**October**

Parents' Evening

**Thursday 16<sup>th</sup> October**

Diwali Day

**Friday 17<sup>th</sup> October**

Year 5 to Beaumanor Hall

**Monday 20<sup>th</sup> October- Friday**

**24<sup>th</sup> October**

Half Term Week

### School Vegetable and Produce Sale

Please support our Harvest Sale which takes place on **Thursday 25<sup>th</sup> September in the KS2 playground from 3:20pm - 4pm**. Mrs Davies works extremely hard with our children to grow and harvest a variety of vegetables and make a number of sweet treats. All the money raised goes towards continuing to provide our children with the skills and knowledge to grow, prepare and cook/bake our own food.

Please come along and support us!



**As the weather is starting to get colder and wetter, please ensure your child has a coat in school.**



**Doing all the good we can through faith, love and excellence!**



## Behaviour Policy and Practices

This term we have introduced some changes to our behaviour policy and practices to support all children in being more reflective about their behaviour.

Our reward systems remain unchanged with children earning Dojo's which add up to badges at various points. We are also celebrating our 'Stars of the Day' and 'Stars of the Week' and have added an extra hot chocolate treat on a Friday afternoon for children chosen by Mr. Bools or Mrs. Hawkins who have shown our learning values brilliantly.

We have removed 'Golden time' on a Friday afternoon and introduced a daily 'Move it' activity at the end of every day to enable all children to decompress and expel any last bits of energy before the journey home. This is a physical activity, building on their fitness and PE skills.

When supporting children who have made the wrong choice, teachers will ask children to talk through and complete a reflection sheet to enable each child to learn from their mistake and discuss how they would manage this situation in the future. Phase Leaders may (depending on the incident) use the White, Yellow or Red report system.

A link to our new policy containing the full details of our approach will be added to our website shortly.



The Autumn Tournament is here!  
**Starts: Tuesday 9<sup>th</sup> September 2025.**  
**Ends: Tuesday 23<sup>rd</sup> September 2025.**

Prizes for the top three contributors in each class plus a certificate. To protect the children's wellbeing we have restricted the competition time from 8:00 am to 19:00 pm. We have also placed a restriction on how long the children can contribute for to an hour.

The winning class in each Year group will be awarded extra playtime in the last week of half term.

**TIMES TABLES ROCK STARS**  
CONGRATULATIONS!  
NAME: \_\_\_\_\_  
DOB: \_\_\_\_\_  
CLASS: \_\_\_\_\_

• Koalas vs Pandas  
• Giraffes vs Zebras  
• Panthers vs Leopards  
• Lions vs Tigers

### **Our Safeguarding Team**



### **Keeping Children Safe in Education is a statutory Department for Education document,**

which all schools must follow when carrying out their duties to safeguard and promote the welfare of children. It covers many aspects of safeguarding including different forms of abuse, early help processes, safe recruitment, how concerns must be reported and the role of the Designated Safeguarding Leads.

Safeguarding and promoting the welfare of children is defined as:

- Protecting children from maltreatment
- Preventing impairment of children's mental and physical health or development
- Ensuring that children grow up in circumstances consistent with the provision of safe and effective care; and
- Taking action to enable all children to have the best outcomes.

The full document is available to read here:

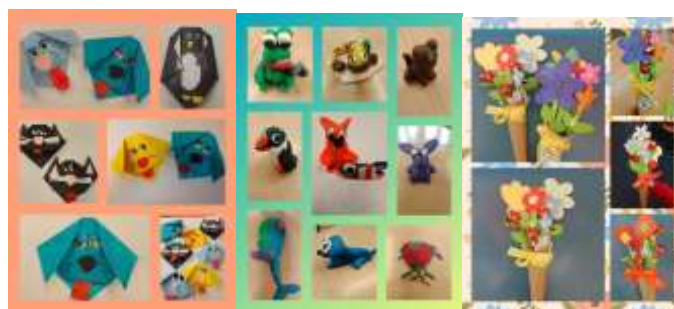
<https://www.gov.uk/government/publications/keeping-children-safe-in-education--2>

## Cuthbert's Club

Cuthbert's Club is our extended before and after school provision which provides a range of indoor and outdoor play and craft activities led by experienced staff. Please visit our website or contact our School Office for full details about how to book and time slots available.

For families who already use our provision, please see below a reminder of our Booking Conditions. These are vital in order for us to provide a safe and sustainable provision for all children.

1. I understand that I must sign and return a copy of the Club Parental Contract and agree to the terms therein before any School Care provision commences. (This is completed through the Kids Club HQ app).
2. Once a place has been booked it will remain booked from term to term, school year to school year until such time as you give written notice either by letter, email or completion of a cancellation within the Kids Club HQ app.
3. A notice period of 24 hours is required to change any pre-booked arrangement or to cancel a place. Charges for the place may be issued.
4. Invoices will be raised monthly for sessions booked and payment is required within 7 days. Sessions booked but not used will not be credited, refunded or swapped. If payment is made through external childcare vouchers, we can only claim for sessions that your child actually attends. Absence due to long term sickness (over 5 days) will not be charged. Fees unpaid may result in your child's place being cancelled.
5. Persistent late collections, non-payment of fees, repeated non-attendance without required cancellation time, could lead to a cancellation of your child's place.
6. For the after-school care, if you arrive late to pick up your child you will be invoiced for the additional fee to the end of the next session (for example if you book until 4.30pm but pick up at 4.40pm you will be invoiced for the fee to 5.00pm retrospectively).
7. If, on odd occasion, you need to pick them up earlier then you MUST inform a member of club staff or send an email before 11.00am on the day. Payment for the session booked still applies.
8. The after-school care provision closes at 6.00pm. We will charge a late collection fee for every 10 minutes after 6.00pm. Please let the club school team know if you are going to be late. We reserve the right to exclude children from our clubs if they are consistently collected after the club's closing time.
9. If after doing everything possible to contact parents and emergency contacts, the child still remains at the provision at 6.30pm the after-school team will follow the Uncollected Child Policy and contact Social Care.





## Spaces now available at Rainbows in Great Glen Tuesday 5pm – 6pm

Do you know a little girl aged 4 to 7 who loves to play, imagine, and explore?

**Rainbows is the perfect place for girls to start their adventure with Girlguiding!**

At Rainbows, girls:

- 🌈 Make new friends in a safe, welcoming space
  - 🎨 Get creative with crafts and games
  - 🍪 Try fun new activities and earn badges
  - 🐾 Explore the world around them
  - 🎪 Build confidence while having loads of fun
- It's all about laughter, learning, and growing together.

**To find out more or register your interest, visit [bit.ly/4fm8CfB](https://bit.ly/4fm8CfB)**



## Spaces now available at Brownies in Great Glen Tuesday 6.10pm – 7.30pm

Do you know someone aged 7 to 10 years old and full of curiosity, creativity, and a sense of adventure?

**She could be missing out on the fun, friendship, and fantastic opportunities that come with being a Brownie!**

At Brownies, girls get to:

- 🌟 Try new activities and learn new skills
- 🌿 Enjoy outdoor adventures
- 🎨 Get creative
- 🤝 Help in their community
- 👭 Make lasting friendships

**To find out more or register your interest, visit [bit.ly/4fm8CfB](https://bit.ly/4fm8CfB)**





# JUDO CLASSES

Amazing Martial Art  
that builds **Confidence,**  
**Self Esteem and Leadership**

Southfields Judo - Great Glen is a new non profit community club. All welcome, any age from 5 - 100!

Come and visit Rob and team at Great Glen Village Hall  
Fridays from 6.30pm to 7.45pm

First session is free! (Usual session fee £4)

**Come and Visit!**

Great Glen Village Hall, Main Street, LE89GG

**Opening Date: 5th September 2025!**

Southfields Judo - Great Glen is a member club of Southfields Judo Kan Leicester who have over 50 years experience of teaching judo within the community. All our coaches are DBS checked and fully insured.

**WhatsApp or Call - 07484 284 538**

# Harvest Festival

## Foodbank Collection



### We need:

- baby food;
- biscuits;
- cereals;
- dried pasta;
- instant coffee;
- long-life fruit juice;
- long-life milk;
- microwaveable puddings;
- pasta sauces;
- rice;
- shower gel;
- snack bars;
- tea bags;
- tinned fruit;
- tinned meat and fish;
- tinned puddings;
- tinned soup;
- tinned vegetables;
- toilet rolls;
- vegetarian options;

No fresh or chilled items, please. Small packets and tins are preferred!

